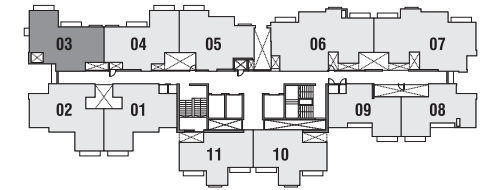
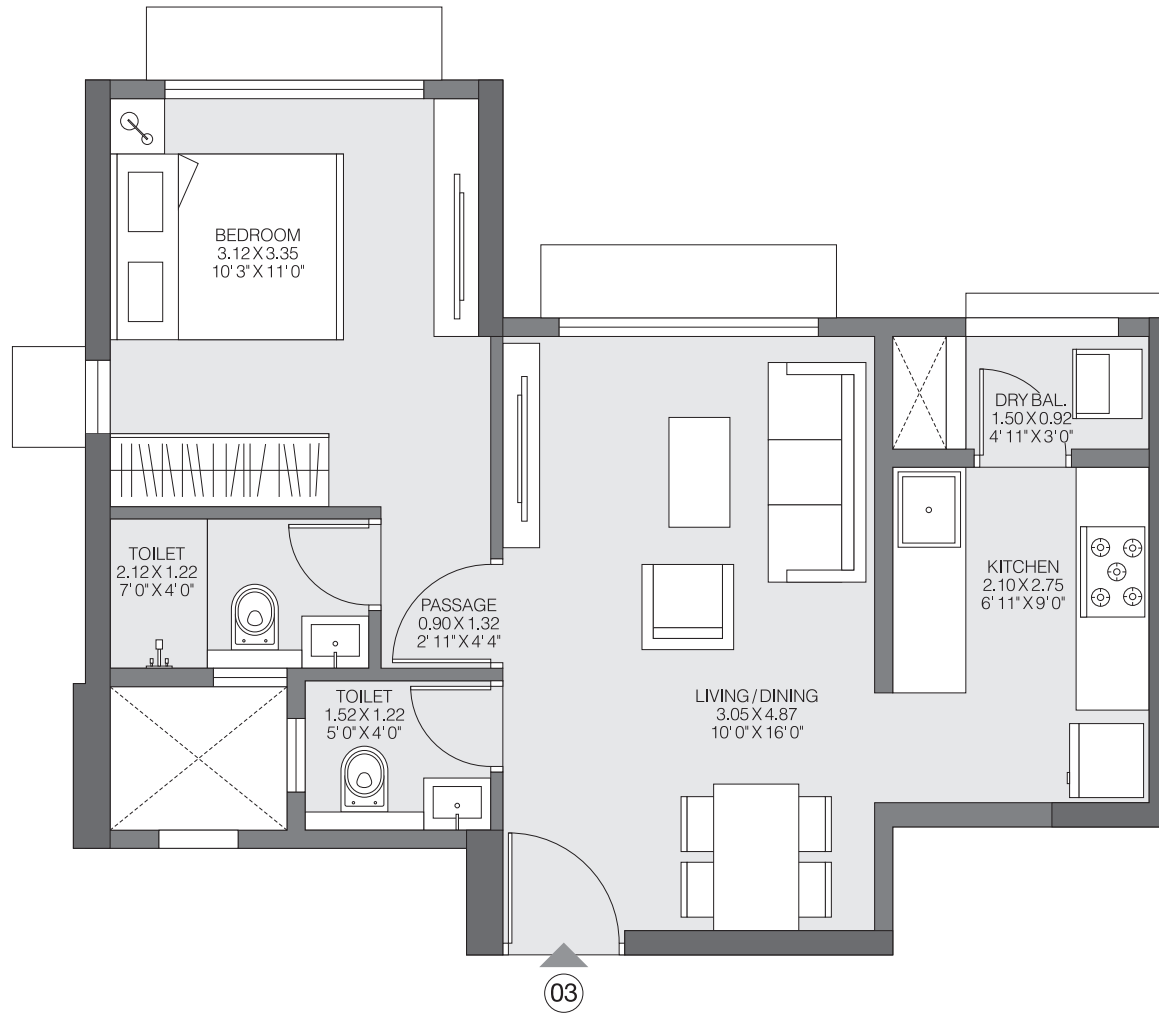


**KALYAN****GODREJ RIVIERA****1BHK LUXE-B**

1st FLOOR

**TOWER-1**

	RERA CARPET	BALCONY AREA	UTILITY AREA	TOTAL (RERA+BALCONY+UTILITY)
SQ.MT	38.33	-	1.39	39.72
SQ.FT	412.58	-	14.96	428

The furniture, decorative items, etc. shown in the plan are only suggested and the same are not intended or obligated to be provide as per specifications and/or service in the flat/unit and does not form part of the standard specifications. The plan represents unit series 03 of Tower 1, 1 Sq m=10.764 Sq ft.

The project is registered as "Godrej Riviera Phase 1" under MahaRERA No. P51700032552 available at <http://maharera.mahaonline.gov.in>

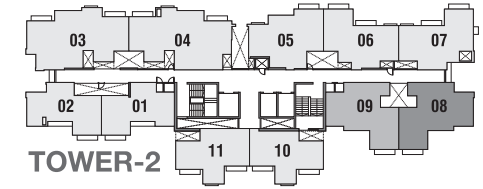
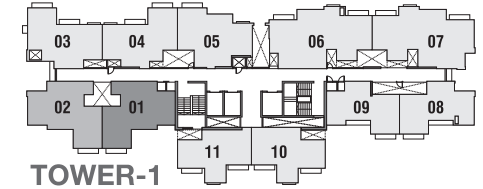
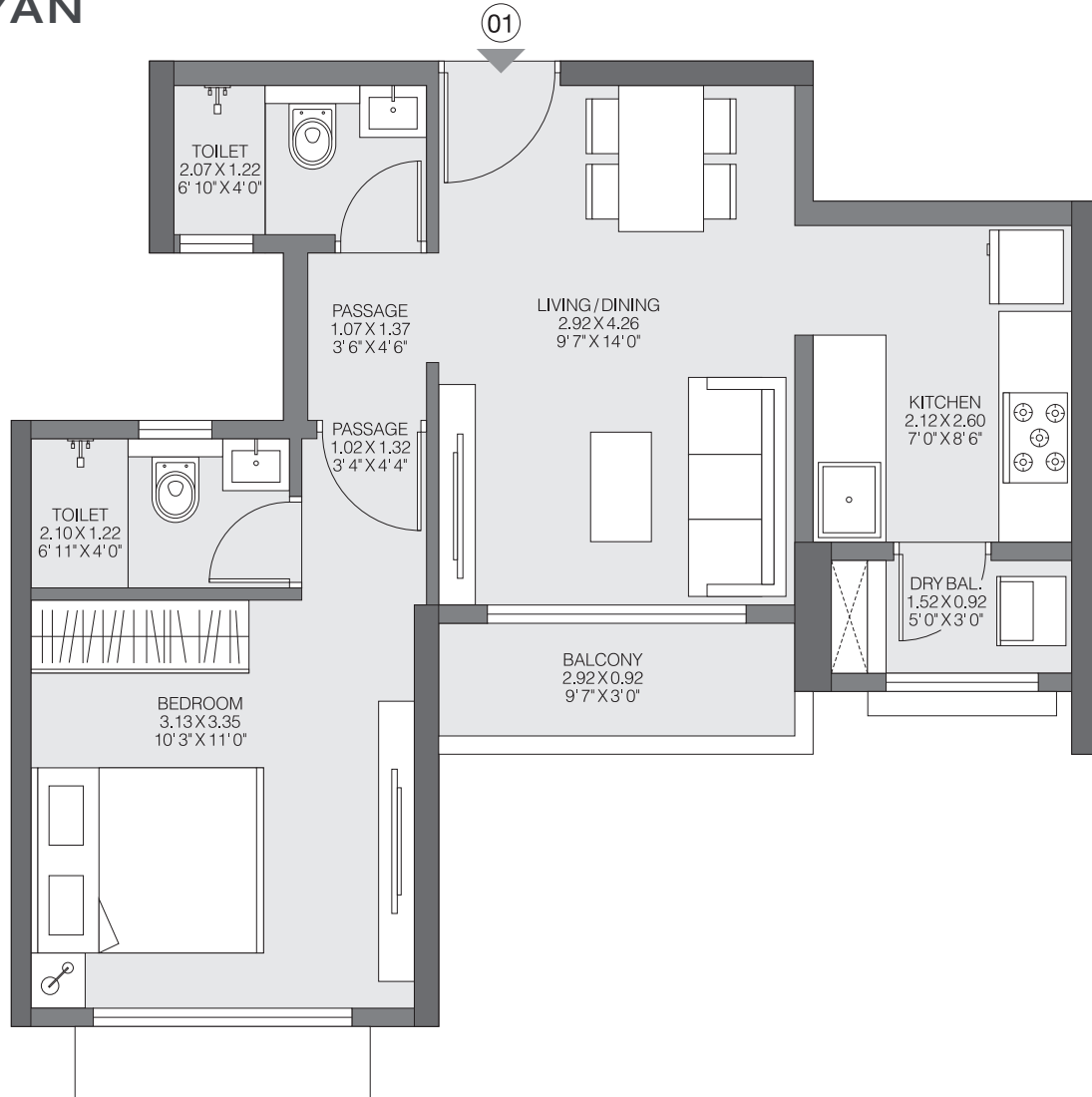


KALYAN

GODREJ RIVIERA

1BHK LUXE-A

1st FLOOR



	RERA CARPET	BALCONY AREA	UTILITY AREA	TOTAL (RERA+BALCONY+UTILITY)
SQ.MT	38.84	2.70	1.41	42.95
SQ.FT	418.07	29.06	15.18	462

The furniture, decorative items, etc. shown in the plan are only suggested and the same are not intended or obligated to be provide as per specifications and/or service in the flat/unit and does not form part of the standard specifications. The plan represents unit series 01, 02 of Tower 1 & Series 08, 09 of Tower 2, 1 Sq m=10.764 Sq ft.

The project is registered as "Godrej Riviera Phase 1" under MahaRERA No. P51700032552 available at <http://maharera.mahaonline.gov.in>

Godrej | PROPERTIES

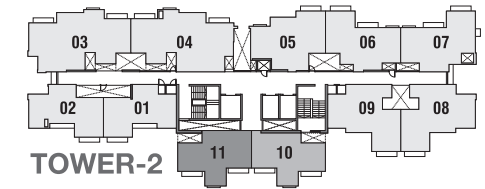
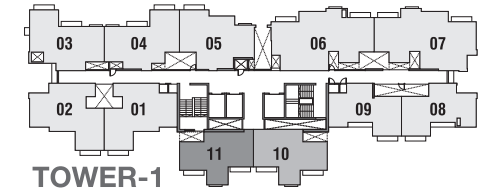
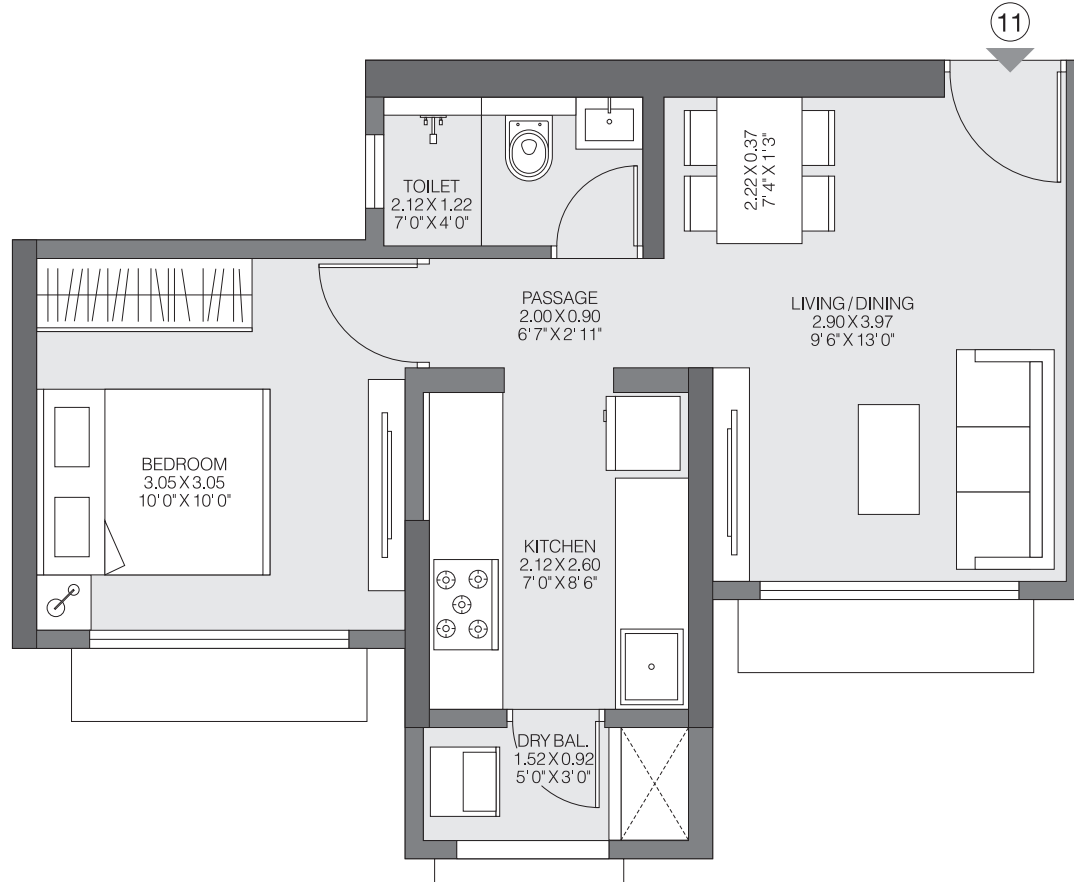


KALYAN

GODREJ RIVIERA

1BHK PREMIUM-B

1st FLOOR



	RERA CARPET	BALCONY AREA	UTILITY AREA	TOTAL (RERA+BALCONY+UTILITY)
SQ.MT	33.93	-	1.41	35.34
SQ.FT	365.22	-	15.18	380

The furniture, decorative items, etc. shown in the plan are only suggested and the same are not intended or obligated to be provide as per specifications and/or service in the flat/unit and does not form part of the standard specifications. The plan represents unit series 10, 11 of Tower 1 & Tower 2, 1 Sq m=10.764 Sq ft.

The project is registered as "Godrej Riviera Phase 1" under MahaRERA No. P51700032552 available at <http://maharera.mahaonline.gov.in>

Godrej | PROPERTIES

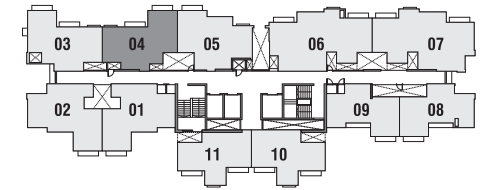
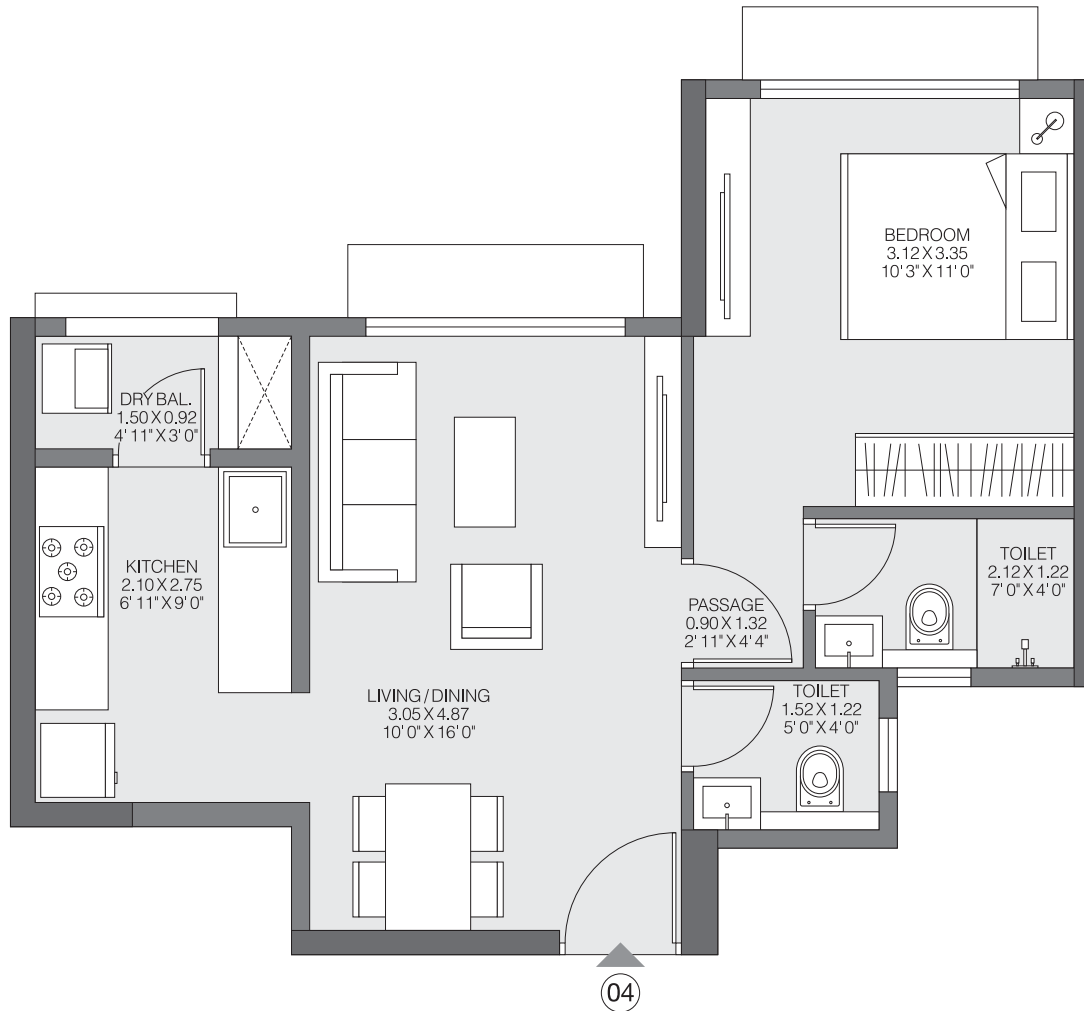


KALYAN

GODREJ RIVIERA

1BHK LUXE-B

1ST FLOOR



TOWER-1



	RERA CARPET	BALCONY AREA	UTILITY AREA	TOTAL (RERA+BALCONY+UTILITY)
SQ.MT	38.33	-	1.39	39.72
SQ.FT	412.58	-	14.96	428

The furniture, decorative items, etc. shown in the plan are only suggested and the same are not intended or obligated to be provide as per specifications and/or service in the flat/unit and does not form part of the standard specifications. The plan represents unit series 04 of Tower 1, 1 Sq m=10.764 Sq ft

The project is registered as "Godrej Riviera Phase 1" under MahaRERA No. P51700032552 available at <http://maharera.mahaonline.gov.in>

Godrej | PROPERTIES

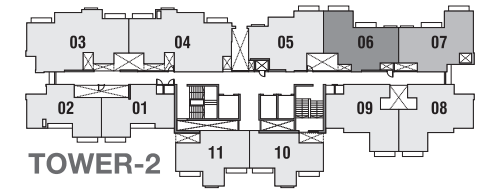
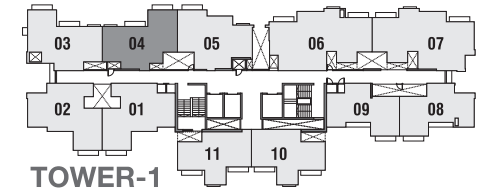
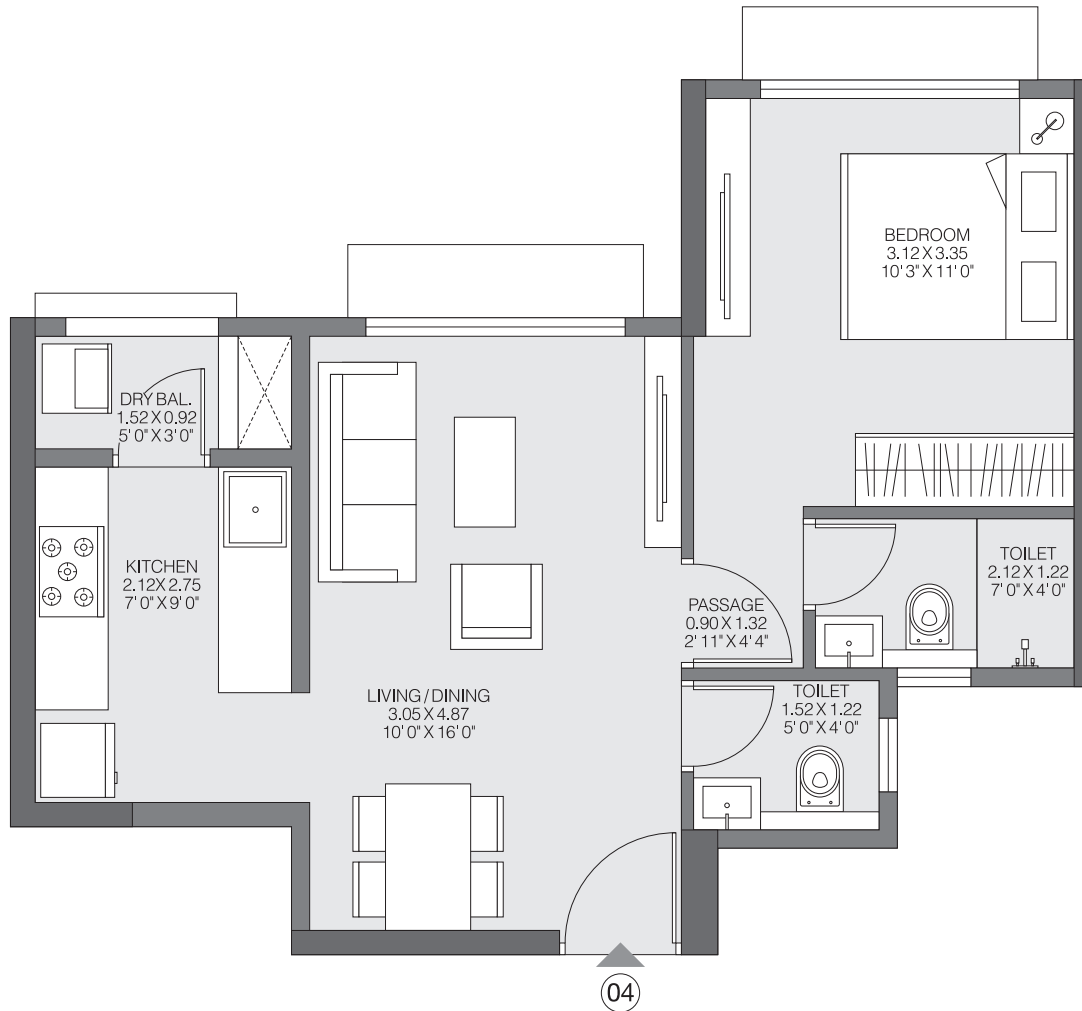


KALYAN

GODREJ RIVIERA

1BHK LUXE-B

TYPICAL FLOOR



	RERA CARPET	BALCONY AREA	UTILITY AREA	TOTAL (RERA+BALCONY+UTILITY)
SQ.MT	38.39	-	1.41	39.8
SQ.FT	413.23	-	15.18	428

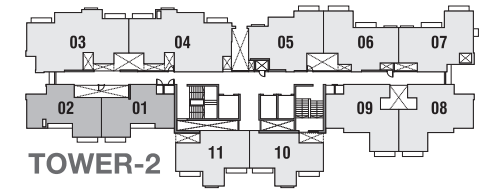
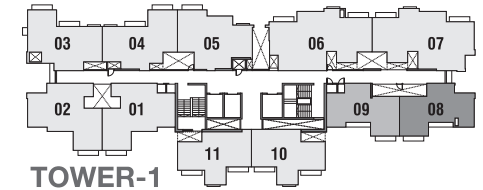
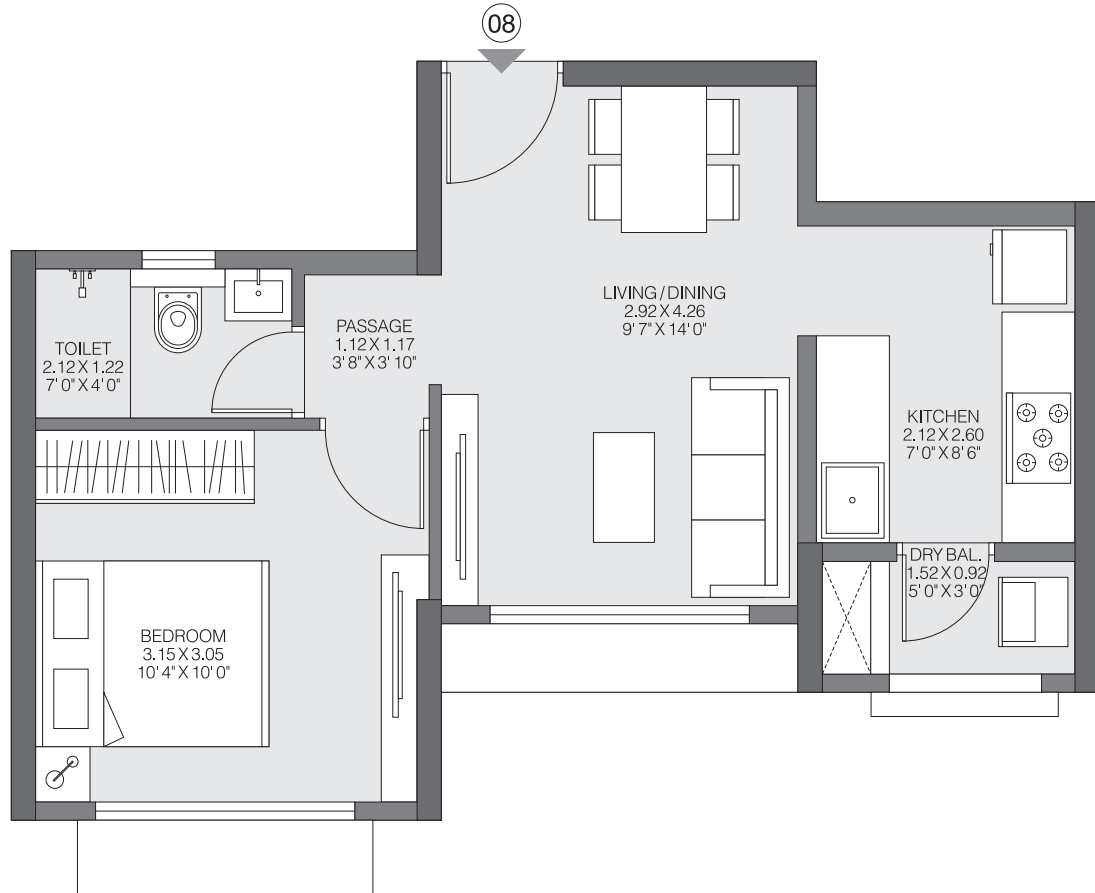
The furniture, decorative items, etc. shown in the plan are only suggested and the same are not intended or obligated to be provide as per specifications and/or service in the flat/unit and does not form part of the standard specifications. The plan represents unit series 04 of Tower 1 & Series 06, 07 of Tower 2, 1 Sq m=10.764 Sq ft.

The project is registered as "Godrej Riviera Phase 1" under MahaRERA No. P51700032552 available at <http://maharera.mahaonline.gov.in>

Godrej | PROPERTIES

**KALYAN****GODREJ RIVIERA****1BHK PREMIUM-A**

TYPICAL FLOOR



	RERA CARPET	BALCONY AREA	UTILITY AREA	TOTAL (RERA+BALCONY+UTILITY)
SQ.MT	33.09	-	1.41	34.5
SQ.FT	356.18	-	15.18	371

The furniture, decorative items, etc. shown in the plan are only suggested and the same are not intended or obligated to be provide as per specifications and/or service in the flat/unit and does not form part of the standard specifications. The plan represents unit series 08, 09 of Tower 1 & series 01, 02 of Tower 2, 1 Sq m=10.764 Sq ft.

The project is registered as "Godrej Riviera Phase 1" under MahaRERA No. P51700032552 available at <http://maharera.mahaonline.gov.in>

Godrej | PROPERTIES

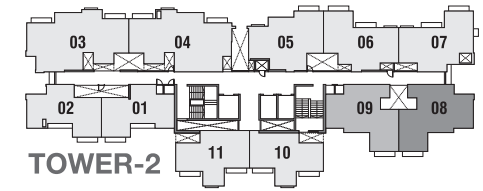
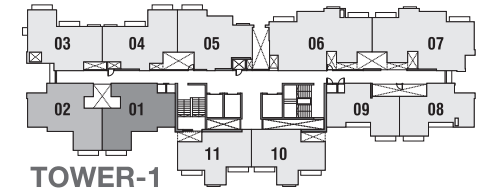
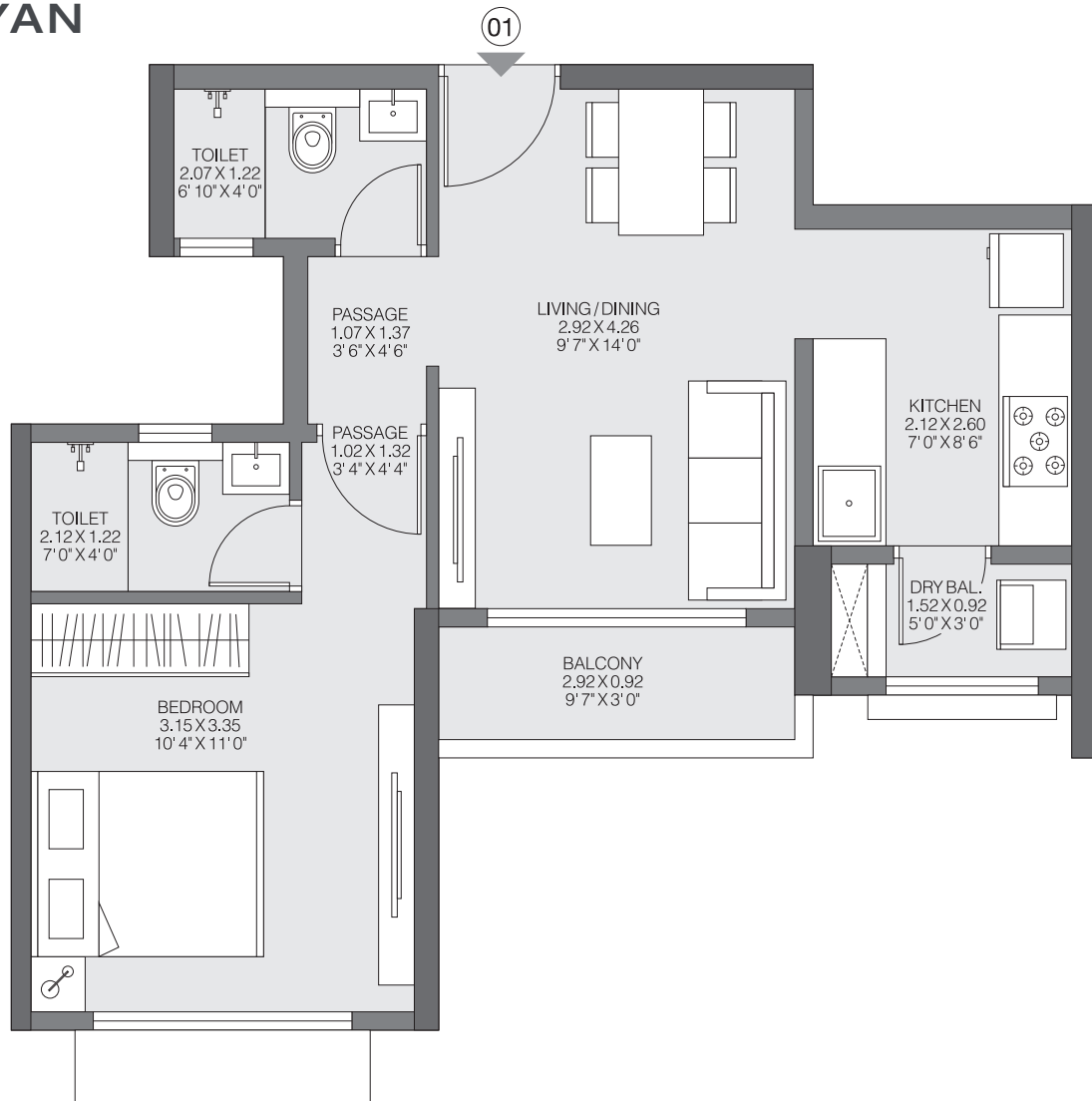


KALYAN

GODREJ RIVIERA

1BHK LUXE-A

TYPICAL FLOOR



	RERA CARPET	BALCONY AREA	UTILITY AREA	TOTAL (RERA+BALCONY+UTILITY)
SQ.MT	38.93	2.70	1.41	43.04
SQ.FT	419.04	29.06	15.18	463

The furniture, decorative items, etc. shown in the plan are only suggested and the same are not intended or obligated to be provide as per specifications and/or service in the flat/unit and does not form part of the standard specifications. The plan represents unit series 01, 02 of Tower 1 & series 08, 09 of Tower 2, 1 Sq m=10.764 Sq ft

The project is registered as "Godrej Riviera Phase 1" under MahaRERA No. P51700032552 available at <http://maharera.mahaonline.gov.in>

Godrej | PROPERTIES

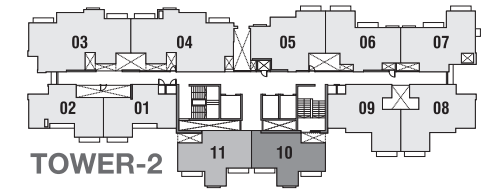
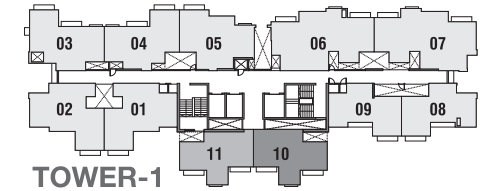
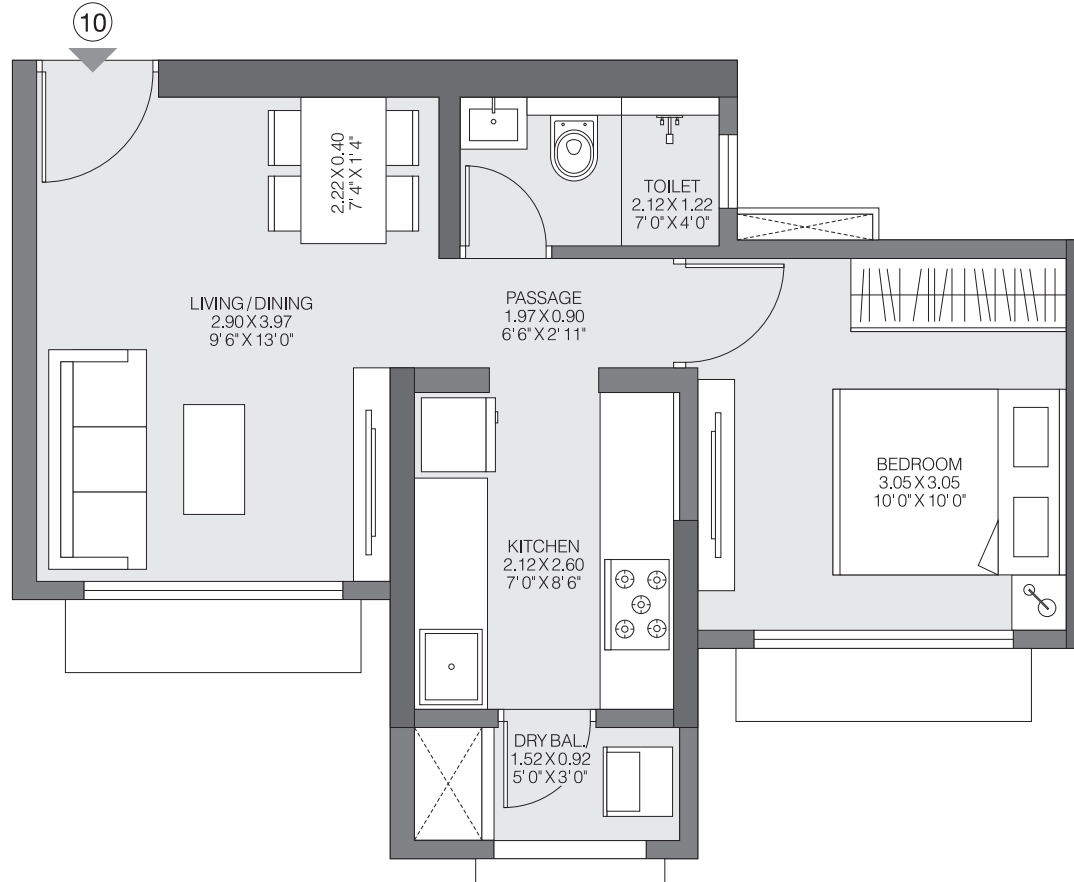


KALYAN

GODREJ RIVIERA

1BHK PREMIUM-B

TYPICAL FLOOR



	RERA CARPET	BALCONY AREA	UTILITY AREA	TOTAL (RERA+BALCONY+UTILITY)
SQ.MT	33.93	-	1.41	35.34
SQ.FT	365.22	-	15.18	380

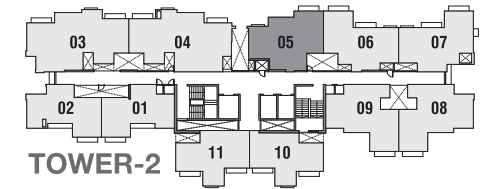
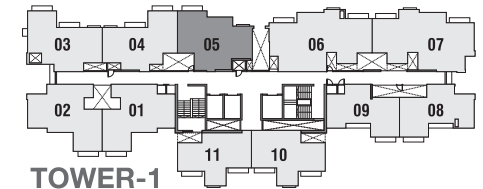
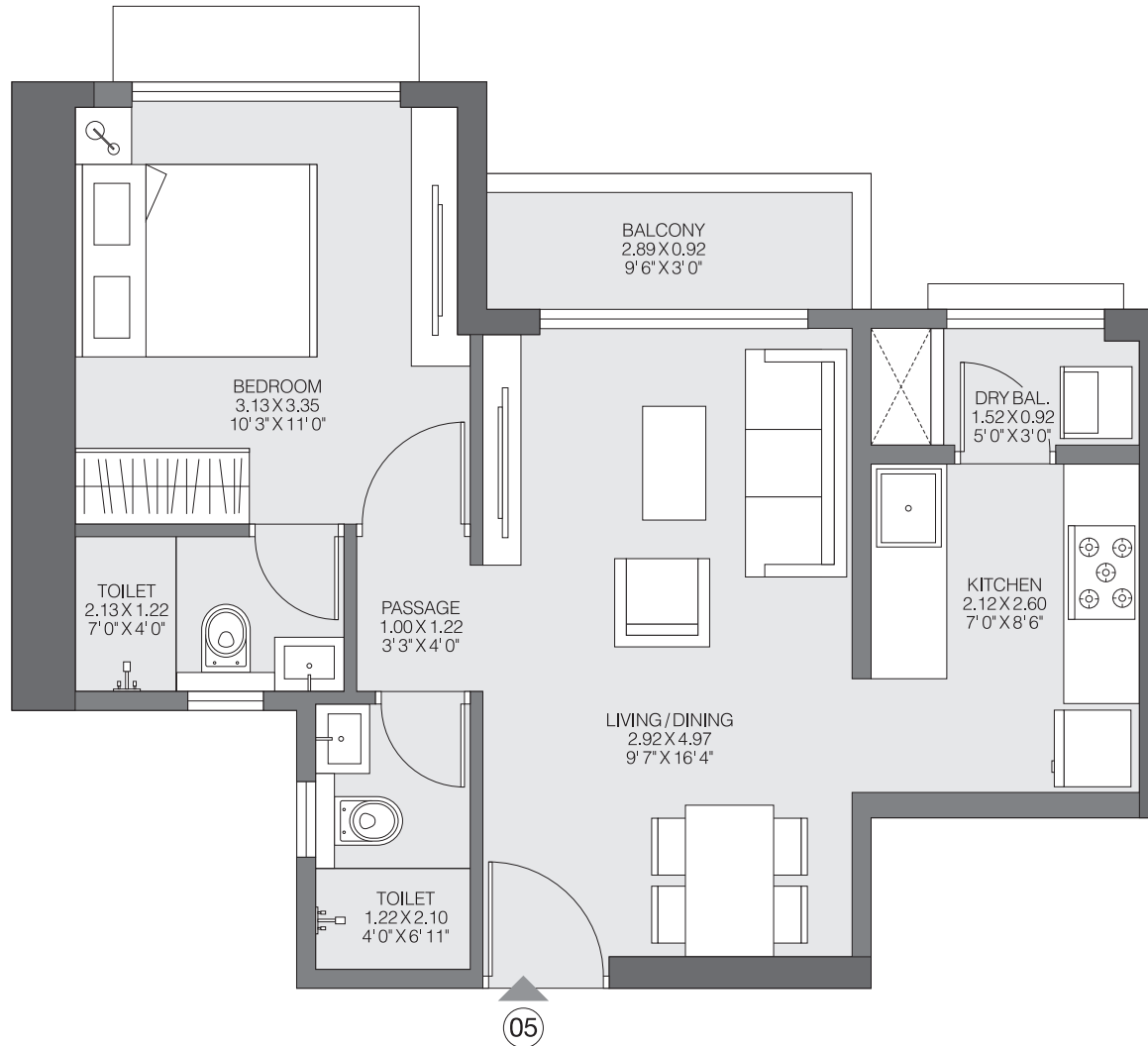
The furniture, decorative items, etc. shown in the plan are only suggested and the same are not intended or obligated to be provide as per specifications and/or service in the flat/unit and does not form part of the standard specifications. The plan represents unit series 10, 11 of Tower 1 & Tower 2, 1 Sq m=10.764 Sq ft.

The project is registered as "Godrej Riviera Phase 1" under MahaRERA No. P51700032552 available at <http://maharera.mahaonline.gov.in>

Godrej | PROPERTIES

**KALYAN****GODREJ RIVIERA****1BHK LUXE-C**

TYPICAL FLOOR



	RERA CARPET	BALCONY AREA	UTILITY AREA	TOTAL (RERA+BALCONY+UTILITY)
SQ.MT	39.25	2.65	1.41	43.31
SQ.FT	422.49	28.52	15.18	466

The furniture, decorative items, etc. shown in the plan are only suggested and the same are not intended or obligated to be provide as per specifications and/or service in the flat/unit and does not form part of the standard specifications. The plan represents unit series 05 of Tower 1 & Tower 2, 1 Sq m=10.764 Sq ft

The project is registered as "Godrej Riviera Phase 1" under MahaRERA No. P51700032552 available at <http://maharera.mahaonline.gov.in>

Godrej | PROPERTIES

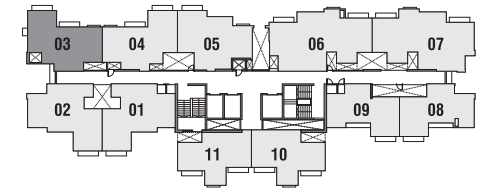
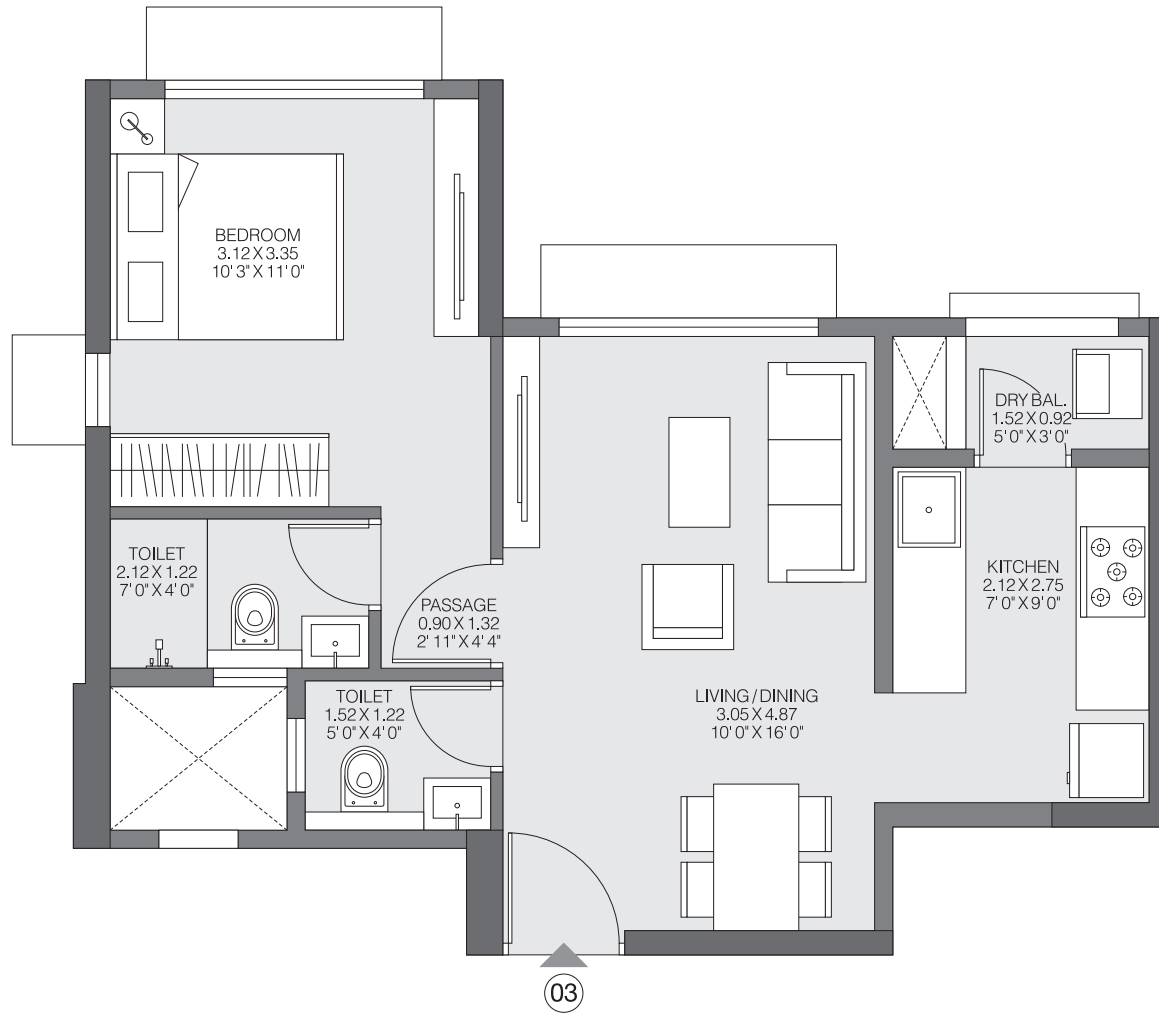


KALYAN

GODREJ RIVIERA

1BHK LUXE-B

TYPICAL FLOOR



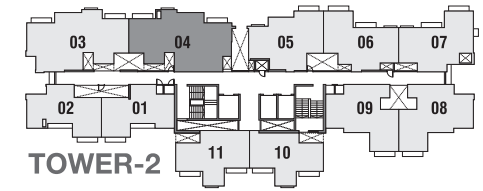
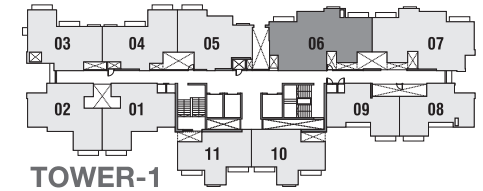
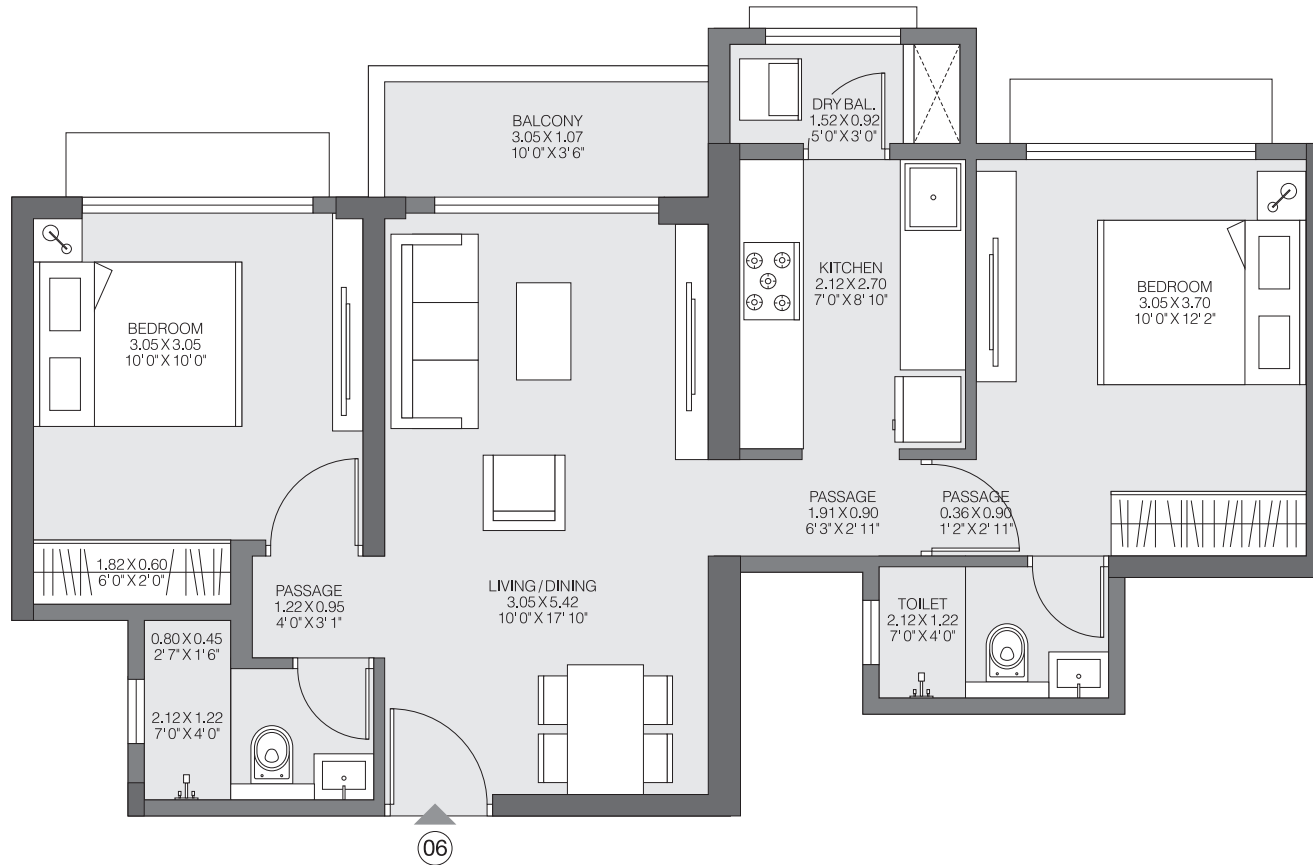
TOWER-1



	RERA CARPET	BALCONY AREA	UTILITY AREA	TOTAL (RERA+BALCONY+UTILITY)
SQ.MT	38.39	-	1.41	39.8
SQ.FT	413.23	-	15.18	428

The furniture, decorative items, etc. shown in the plan are only suggested and the same are not intended or obligated to be provide as per specifications and/or service in the flat/unit and does not form part of the standard specifications. The plan represents unit series 03 of Tower 1, 1 Sq m=10.764 Sq ft

The project is registered as "Godrej Riviera Phase 1" under MahaRERA No. P51700032552 available at <http://maharera.mahaonline.gov.in>

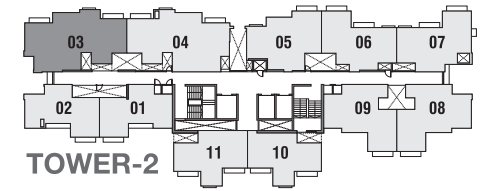
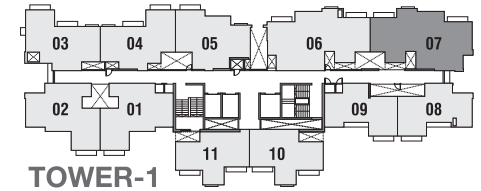
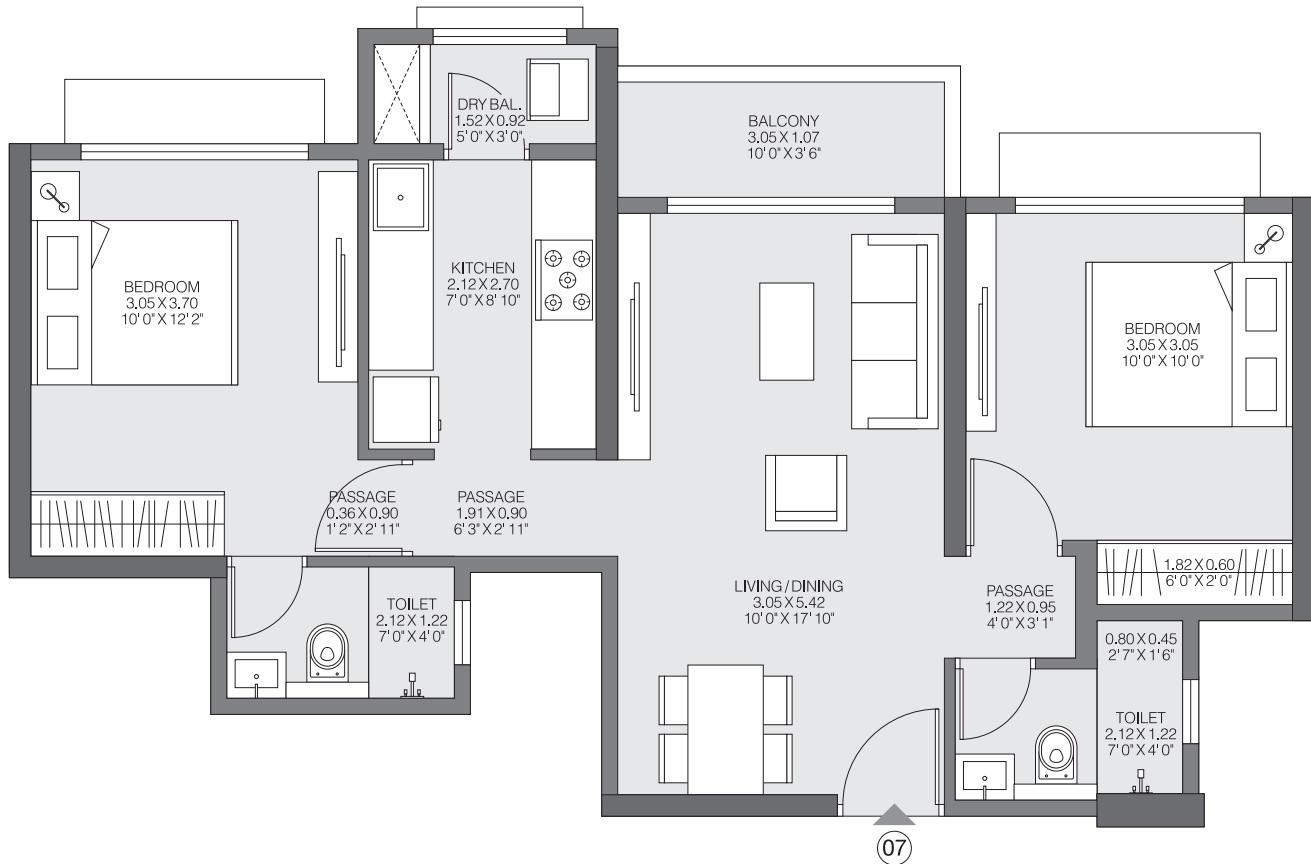
**KALYAN****GODREJ RIVIERA****2BHK LUXE-A****TYPICAL FLOOR**

	RERA CARPET	BALCONY AREA	UTILITY AREA	TOTAL (RERA+BALCONY+UTILITY)
SQ.MT	56.80	3.33	1.47	61.60
SQ.FT	611.40	35.84	15.82	663

The furniture, decorative items, etc. shown in the plan are only suggested and the same are not intended or obligated to be provide as per specifications and/or service in the flat/unit and does not form part of the standard specifications. The plan represents unit series 06 of Tower 1 & series 04 of Tower 2, 1 Sq m=10.764 Sq ft.

The project is registered as "Godrej Riviera Phase 1" under MahaRERA No. P51700032552 available at <http://maharera.mahaonline.gov.in>

Godrej PROPERTIES

**KALYAN****GODREJ RIVIERA****2BHK LUXE-A****TYPICAL FLOOR**

	RERA CARPET	BALCONY AREA	UTILITY AREA	TOTAL (RERA+BALCONY+UTILITY)
SQ.MT	56.43	3.39	1.41	61.23
SQ.FT	607.41	36.49	15.18	659

The furniture, decorative items, etc. shown in the plan are only suggested and the same are not intended or obligated to be provide as per specifications and/or service in the flat/unit and does not form part of the standard specifications. The plan represents unit series 07 of Tower 1 & series 03 of Tower 2, 1 Sq m=10.764 Sq ft.

The project is registered as "Godrej Riviera Phase 1" under MahaRERA No. P51700032552 available at <http://maharera.mahaonline.gov.in>

Godrej | PROPERTIES

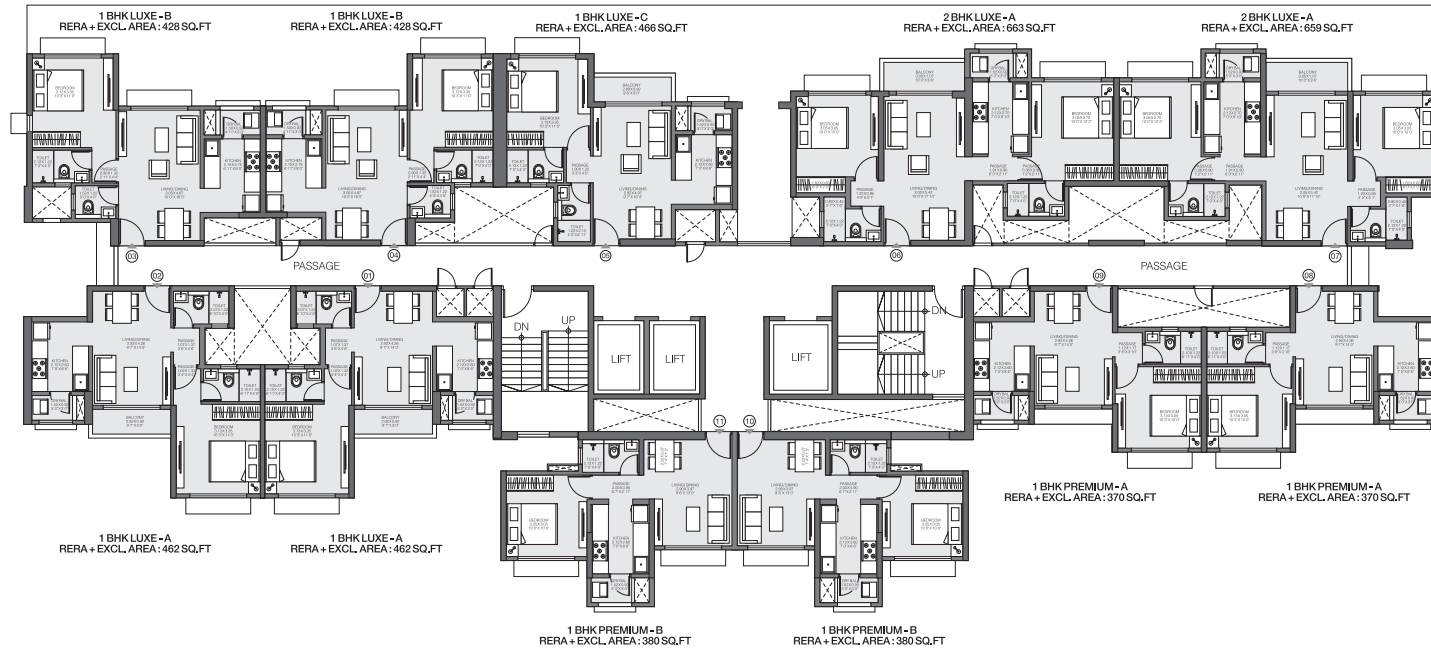


KALYAN

GODREJ RIVIERA

TOWER-1

1st FLOOR



The furniture, decorative items, etc. shown in the plan are only suggested and the same are not intended or obligated to be provided as per specifications and/or service in the flat/ unit and does not form part of the standard specifications. 1 Sq m = 10.764 Sq ft.

The project is registered as "Godrej Riviera Phase 1" under MahaRERA No. P51700032552 available at <http://maharera.mahaonline.gov.in>

Godrej | PROPERTIES



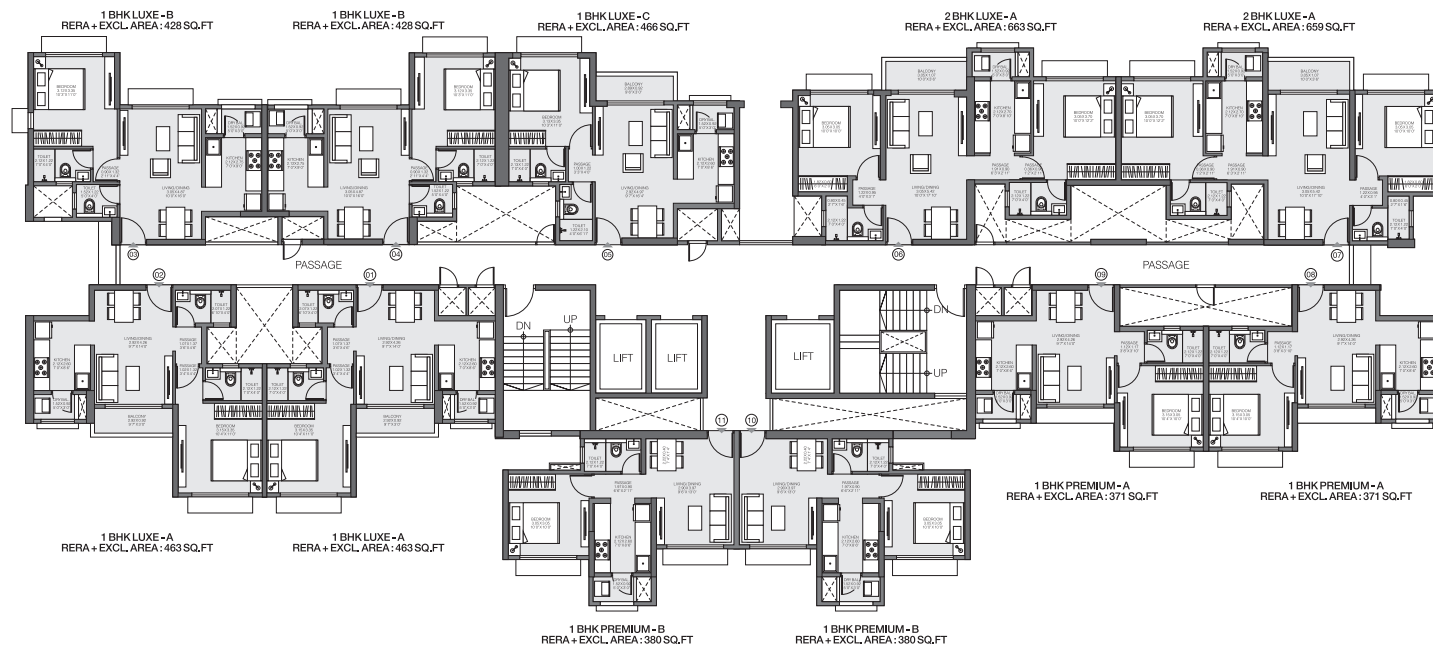
KALYAN

GODREJ RIVIERA

TOWER-1

TYPICAL FLOOR

2nd to 6th, 8th to 11th,
13th to 16th, 18th to 21st



The furniture, decorative items, etc. shown in the plan are only suggested and the same are not intended or obligated to be provided as per specifications and/or service in the flat/ unit and does not form part of the standard specifications. 1 Sq m = 10.764 Sq ft.

The project is registered as "Godrej Riviera Phase 1" under MahaRERA No. P51700032552 available at <http://maharera.mahaonline.gov.in>

Godrej | PROPERTIES



KALYAN

GODREJ RIVIERA

TOWER-1

REFUGE FLOOR

7th, 12th, 17th & 22nd



The furniture, decorative items, etc. shown in the plan are only suggested and the same are not intended or obligated to be provided as per specifications and/or service in the flat/ unit and does not form part of the standard specifications. 1 Sq m = 10.764 Sq ft.

The project is registered as "Godrej Riviera Phase 1" under MahaRERA No. P51700032552 available at <http://maharera.mahaonline.gov.in>

Godrej | PROPERTIES

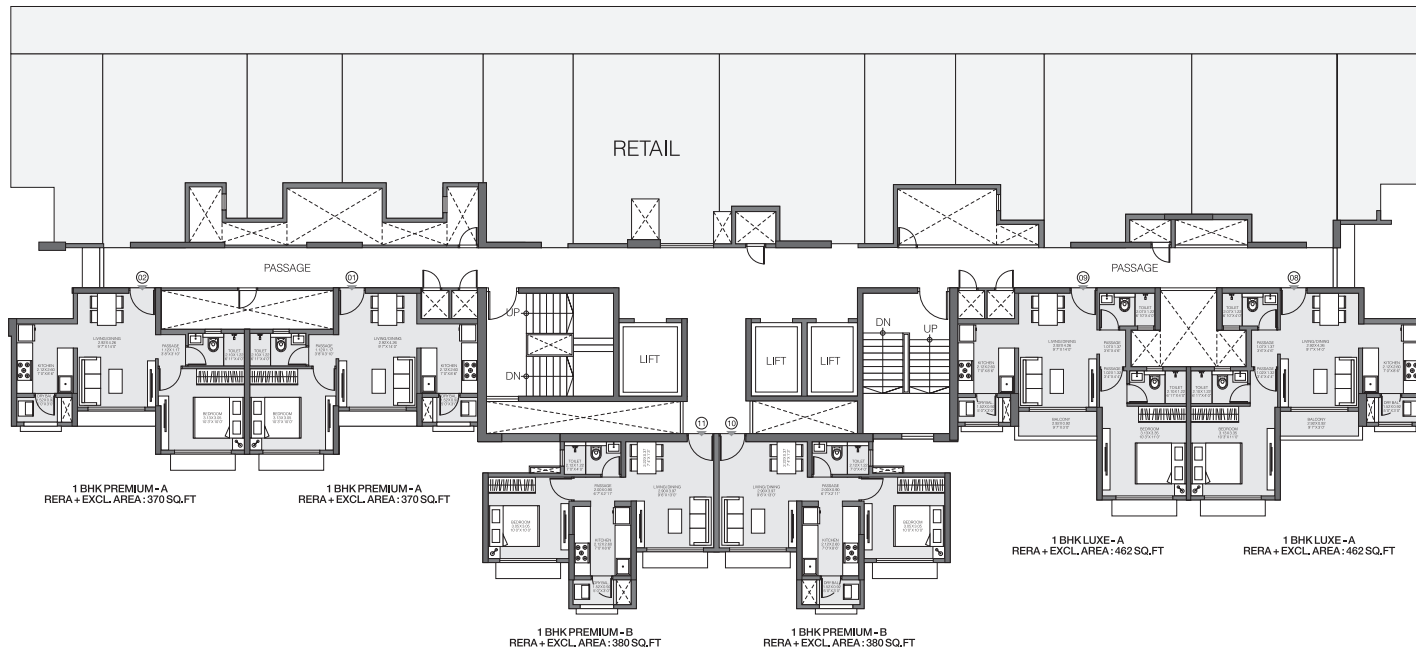


KALYAN

GODREJ RIVIERA

TOWER-2

1st FLOOR



The furniture, decorative items, etc. shown in the plan are only suggested and the same are not intended or obligated to be provided as per specifications and/or service in the flat/ unit and does not form part of the standard specifications. 1 Sq m = 10.764 Sq ft.

The project is registered as "Godrej Riviera Phase 1" under MahaRERA No. P51700032552 available at <http://maharera.mahaonline.gov.in>

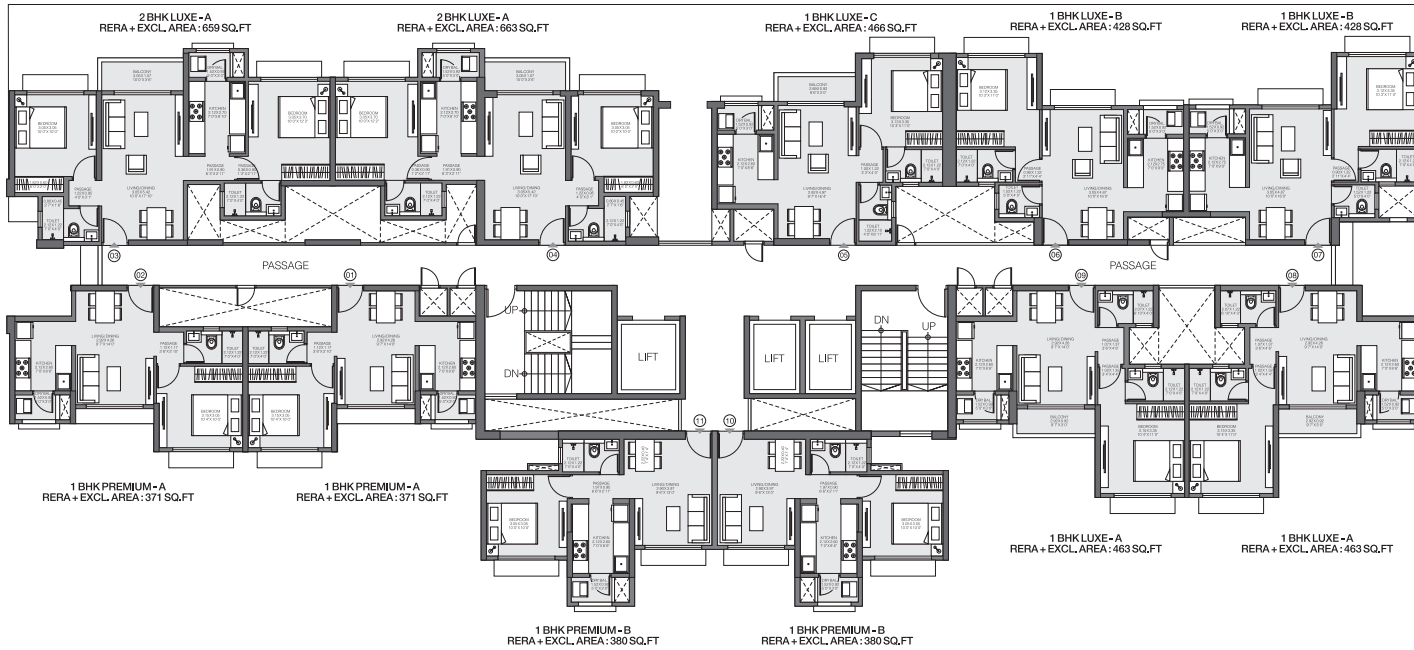


KALYAN

GODREJ RIVIERA

TOWER-2

2nd FLOOR



The furniture, decorative items, etc. shown in the plan are only suggested and the same are not intended or obligated to be provided as per specifications and/or service in the flat/ unit and does not form part of the standard specifications. 1 Sq m = 10.764 Sq ft.

The project is registered as "Godrej Riviera Phase 1" under MahaRERA No. P51700032552 available at <http://maharera.mahaonline.gov.in>



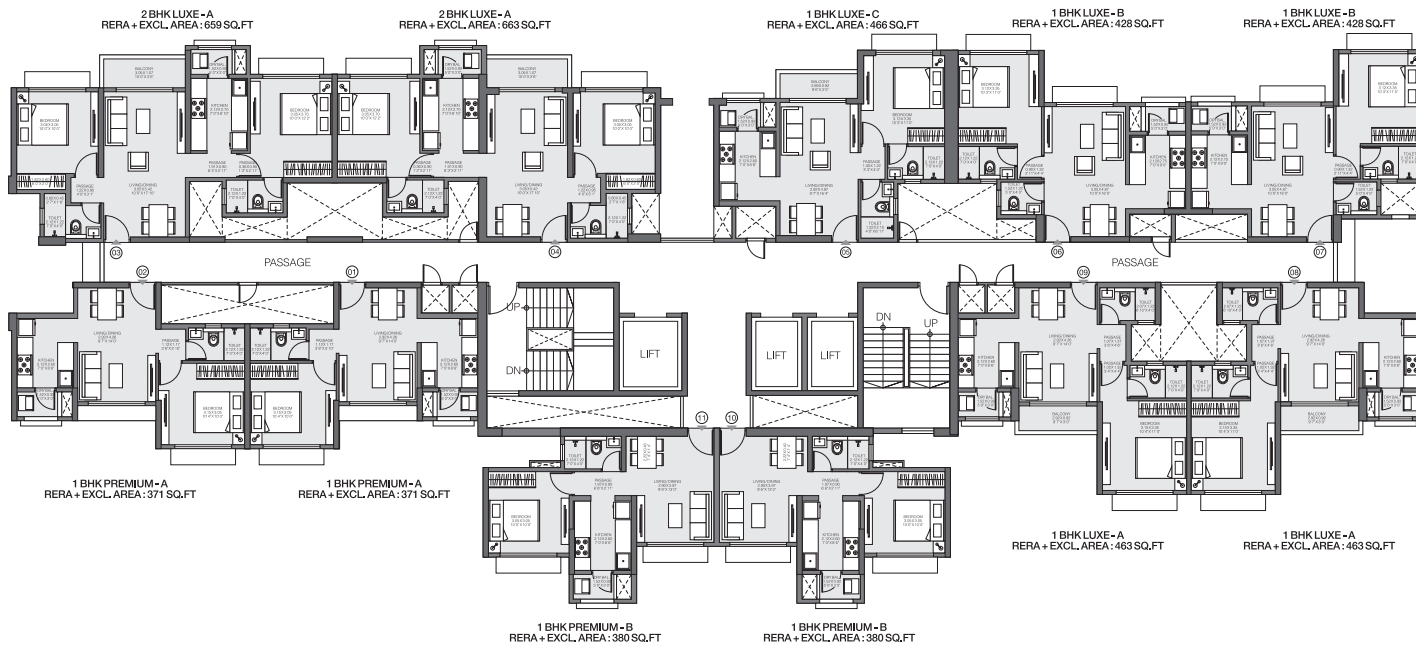
KALYAN

GODREJ RIVIERA

TOWER-2

TYPICAL FLOOR

3rd to 6th, 8th to 11th,
13th to 16th, 18th to 21st



The furniture, decorative items, etc. shown in the plan are only suggested and the same are not intended or obligated to be provided as per specifications and/or service in the flat/ unit and does not form part of the standard specifications. 1 Sq m = 10.764 Sq ft.

The project is registered as "Godrej Riviera Phase 1" under MahaRERA No. P51700032552 available at <http://maharera.mahaonline.gov.in>

Godrej | PROPERTIES



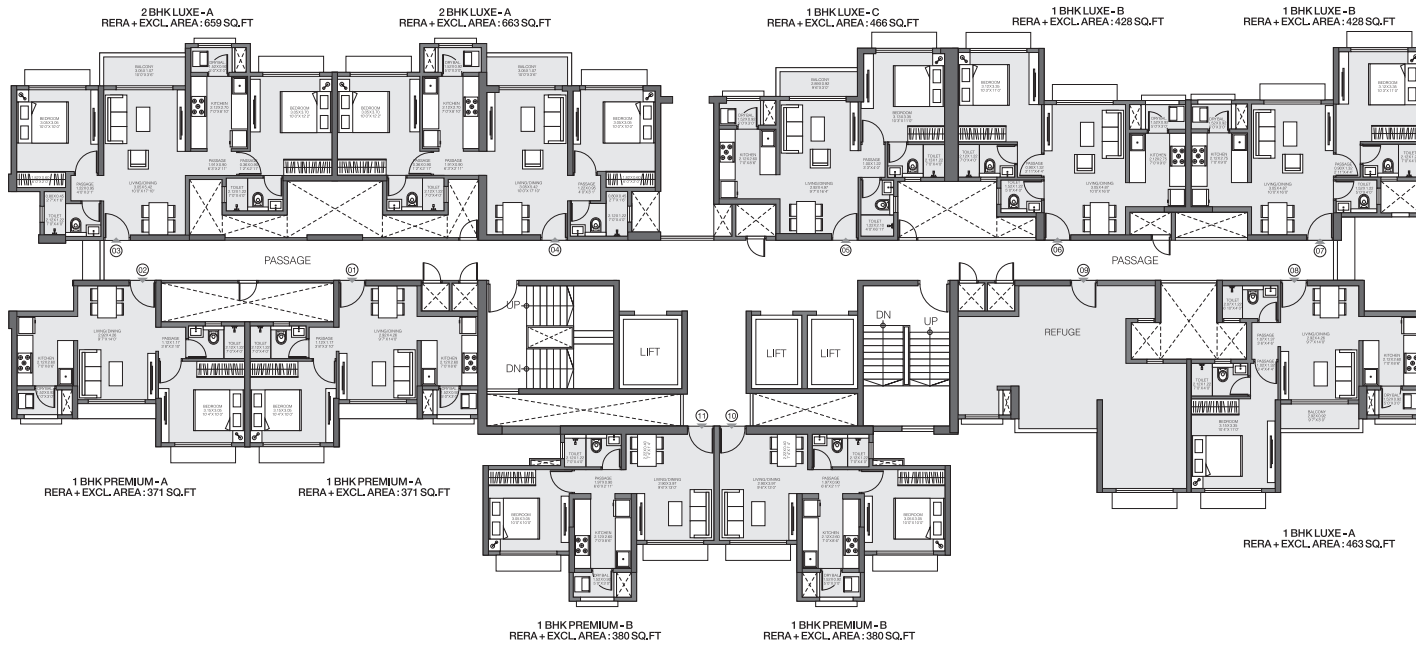
KALYAN

GODREJ RIVIERA

TOWER-2

REFUGE FLOOR

7th, 12th, 17th & 22nd



The furniture, decorative items, etc. shown in the plan are only suggested and the same are not intended or obligated to be provided as per specifications and/or service in the flat/ unit and does not form part of the standard specifications. 1 Sq m = 10.764 Sq ft.

The project is registered as "Godrej Riviera Phase 1" under MahaRERA No. P51700032552 available at <http://maharera.mahaonline.gov.in>